



INFORMACIÓN DEL PRODUCTO

Modelo:K56AC53F07CX
1 HP, 1 Ph, 60 Hz, 110/220 V, 1800 RPM,
Frame K56, DP





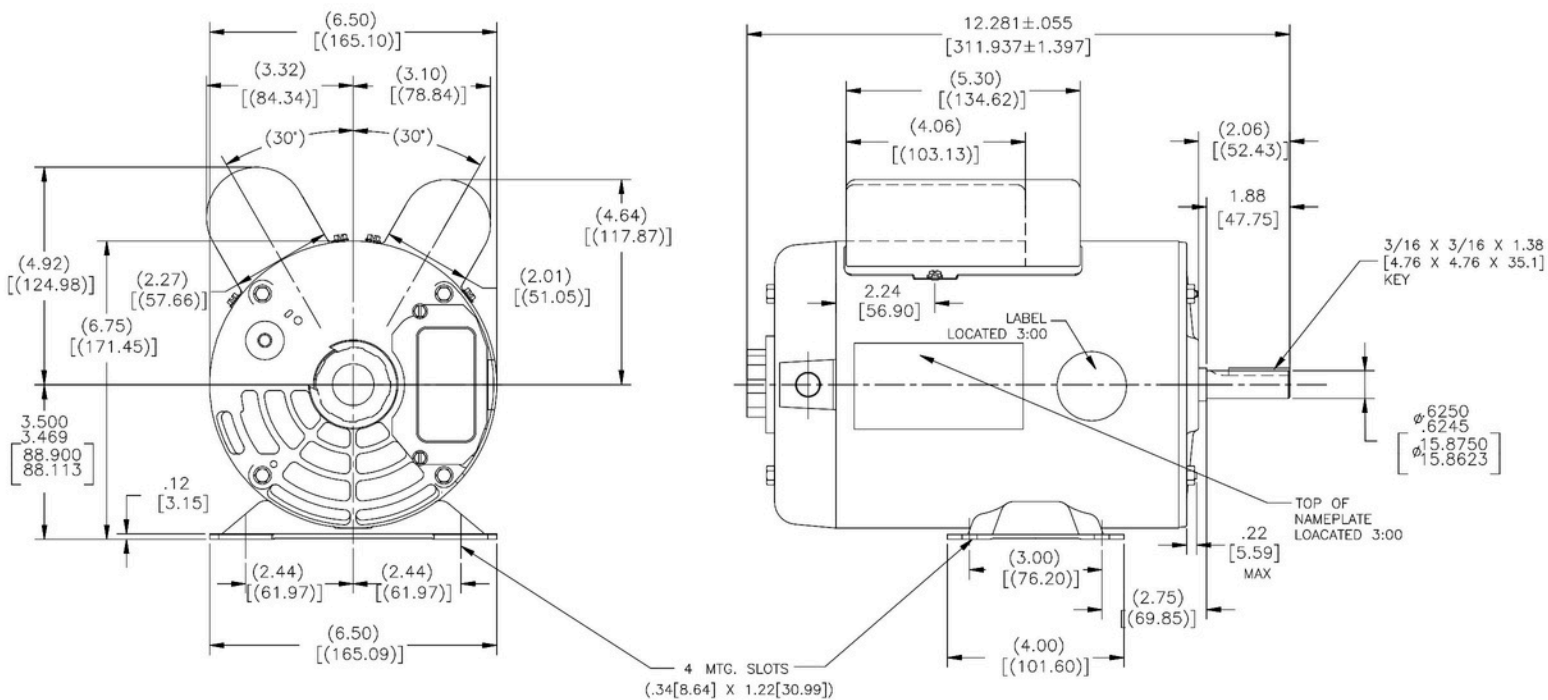
Detalles de la Placa de Identificación

Fase	1	Potencia de Salida (HP)	1 HP
Potencia de Salida (kW)	0.75 kW	Voltaje	110/220V
Velocidad	1800 RPM	Factor de Servicio	1,25
Frame	K56	Tipo de Carcasa	Semiabierta (ODP)
Protección Térmica	No	Temperatura Ambiente	40° C
Frecuencia	60 HZ	Corriente full carga @110V	10.44 AMPS
Régimen de trabajo	Continuo	Clase de Aislamiento	Clase B
Certificación UL	SÍ	Certificación CSA	SÍ
Certificación CE	SÍ		

Especificaciones Técnicas

Tipo	Eléctrico	Método de arranque	Eléctrico
Polos	4	Dirección de rotación	Ambos sentidos
Montaje	Base resiliente	Tipo de eje	Eje cuña

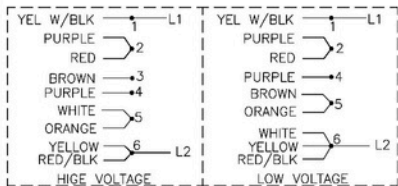
Información del producto: Modelo:K56AC53F07CX, 1 HP, 1 Ph, 60 Hz, 110/220V, 1800 RPM, Frame K56, DP



NAMEPLATE DATA

MODEL: K56AC53F07
 CUST PN: --
 HP: 1.0 SF: 1.15
 ROT: REV
 RPM: 1725
 TYPE: CP CODE: --
 FORM: KHH FRAME: K56
 VOLTS: 110-127/208-230
 AMPS: 10.44-10.26/5.48-5.12
 MAX AMPS: --
 SF AMPS: 9.96-10.72/5.79-5.26
 PH: 1 HZ: 60
 INS: F AMB: 40°C
 DUTY: CONT
 ENCLOSURE: IP21
 NO THERMALLY PROTECTED

EXTERNAL CONNECTION DIAGRAM



CONNECTION SHOWS ARE FOR C.W. FROM LEAD END. FOR C.W/LR ROTATION, INTERCHANGE YELLOW AND RED LEADS.

NOTES

1. SHAFT RUNOUT NOT TO EXCEED .002[.05] T.I.R
2. THE LEAD ASSY SHOULD TO COME CONNECTED AT 110V. IF THE CUSTOMER NEEDS TO SWITCH TO 220V, HE/SHE WILL OPEN THE COVER AND SWITCH IT MANUALLY, FOLLOWING THE ELECTRICAL DIAGRAM.

PERFORMANCE CURVE

APPROVED SAMPLE

OER-008063

UL COMPONENT

CSA

FILE#

CCN#

FILE#

GUIDE#

CUSTOMER

RBM

DRAWING REVISION	REVISION BY	DATE	TOLERANCES UNLESS OTHERWISE SPECIFIED	DRAWN BY:	Regal Beloit America, Inc.
H	MINJING JIANG	09-26-2017	DEC. INCH	X AN	
ECO-0131232	APPROVED BY	DATE	.XX ±0.1 [(±2.5)]	DATE:	09-16-2015
	QINGFENG HE	09-26-2017	.XX ±0.02 [(±0.51)]	APPROVED BY:	TJHAO
			.XXX ±0.005 [(±0.127)]	DATE:	09-16-2015
			.XXXX ±0.0005 [(±0.0127)]	REFERENCE	
			REMOVE BURRS & BREAK SHARP EDGES .003/.015 [076/.381]	MATERIAL	
			CORNER FILLETS .02 [.51]	PROCESS/FINISH	
			MACHINED SURFACES	SIZE DWG NO	
			INCH/mm	K56AC53F07CX	
			THIRD ANGLE PROJECTION	SHEET	1