



INFORMACIÓN DEL PRODUCTO

Modelo:K48AA87F07CX
0.5 HP, 1 Ph, 60 Hz, 110/220V, 1800 RPM,
Frame K48, DP





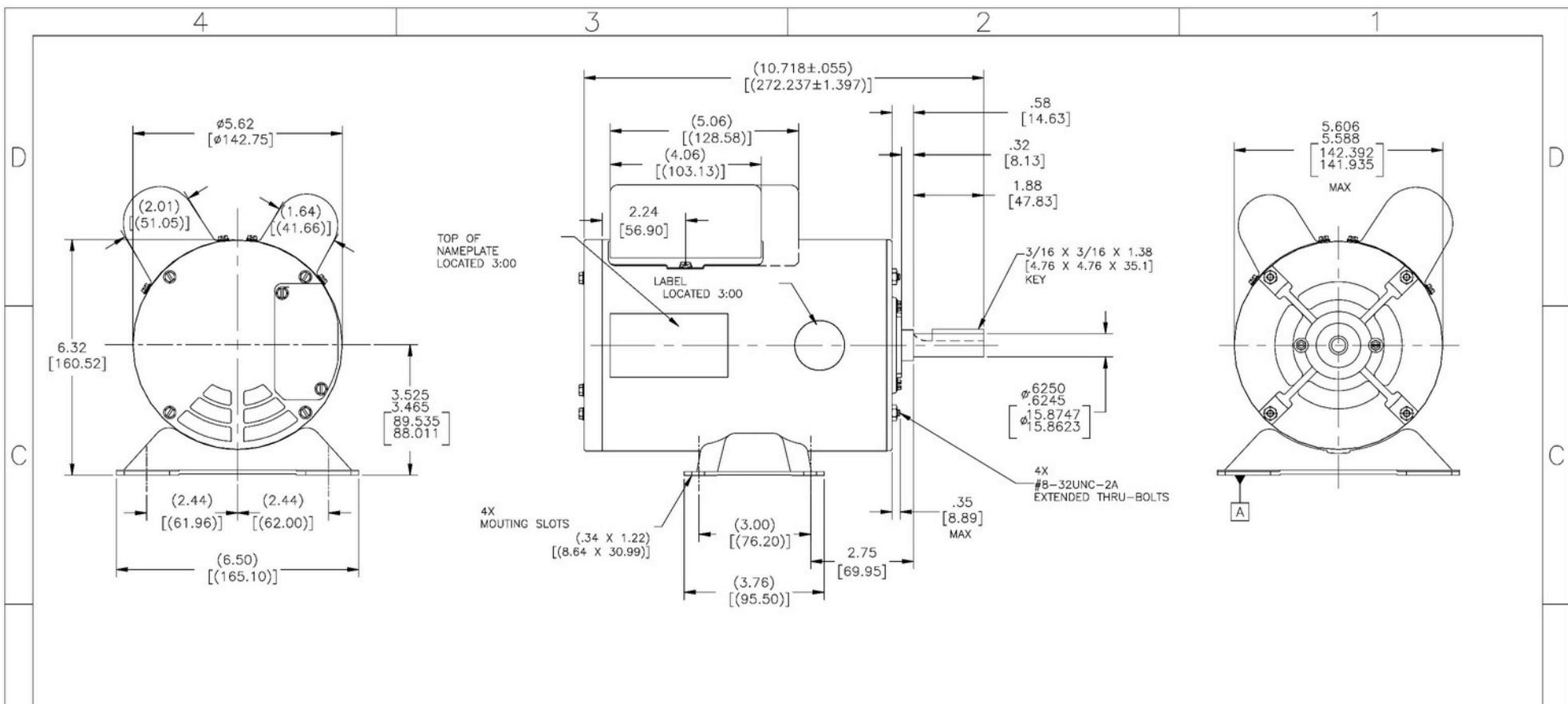
Detalles de la Placa de Identificación

Fase	1	Potencia de Salida (HP)	0.5 HP
Potencia de Salida (kW)	0.37 kW	Voltaje	110/220V
Velocidad	1800 RPM	Factor de Servicio	1,25
Frame	K48	Tipo de Carcasa	Semiabierta (ODP)
Protección Térmica	No	Temperatura Ambiente	40° C
Frecuencia	60 Hz	Corriente full carga @110V	7.04 AMPS
Régimen de trabajo	Continuo	Clase de Aislamiento	Clase B
Certificación UL	Sí	Certificación CSA	Sí
Certificación CE	Sí		

Especificaciones Técnicas

Tipo	Eléctrico	Método de arranque	Eléctrico
Polos	4	Dirección de rotación	Ambos sentidos
Montaje	Base resiliente	Tipo de eje	Eje cuña

Información del producto: Modelo:K48AA87F07CX, 0.5 HP, 1 Ph, 60 Hz, 110/220V, 1800 RPM, Frame K48, DP



NAMEPLATE DATA	EXTERNAL CONNECTION DIAGRAM	NOTES
MODEL: K48AA87F07 CUST PN: ---- HP: 1/2HP SF: 1.25 ROT: REV RPM: 1725 TYPE: CP CODE: - FRAME: K48 VOLTS: 110-127/208-230 AMPS: 7.04-7.25/3.14-3.66 MAX AMPS: ---- PH: 1 HZ: 60 INS: F AMB: 40 DUTY: CONT	<p>CONNECTION SHOWS ARE FOR C.W. FROM LEAD END. FOR CCWLE ROTATION, INTERCHANGE YELLOW AND RED LEADS.</p>	1. SHAFT RUNOUT NOT TO EXCEED .002[.05] T.I.R 2. THE LEAD ASSY SHOULD TO COME CONNECTED AT 110V. IF THE CUSTOMER NEEDS TO SWITCH TO 220V,HE/SHE WILL OPEN THE COVER AND SWITCH IT MANUALLY,FOLLOWING THE ELECTRICAL DIAGRAM.

PERFORMANCE CURVE	APPROVED SAMPLE
---	OER-8036
UL COMPONENT	CSA
FILE#	CCN#
---	---
CUSTOMER	RBM

DRAWING REVISION: G	REVISION BY: CHENG, SHEN	DATE: 10-27-2017	TOLERANCES UNLESS OTHERWISE SPECIFIED
ECO: ECO-0132679	APPROVED BY: TRISIA, ZHAO	DATE: 10-27-2017	DEC. INCH DEC. ANGLE
REMOVE DUST, COVER			.XX ±0.02 (±0.51)
<small> COPYRIGHT REGAL BELOIT AMERICA, INC. ALL RIGHTS RESERVED. PROPRIETARY AND CONFIDENTIAL INFORMATION - THIS DOCUMENT IS THE PROPERTY OF REGAL BELOIT AMERICA, INC. PROPERTY AND CONFIDENTIAL RIGHTS ARE RESERVED. ANY REPRODUCTION OR OTHER USE WITHOUT THE WRITTEN PERMISSION OF REGAL BELOIT AMERICA, INC. IS STRICTLY PROHIBITED. THIS DOCUMENT SHALL BE RETURNED TO OWNER UPON REQUEST. IT MAY BE SUBJECT TO OTHER RESTRICTIONS UNDER APPLICABLE EXPORT CONTROL, LAW AND REGULATIONS. </small>			.XXX ±0.005 (±0.127)
			.XXXX ±0.0005 (±0.0127)
			REMOVE BURRS & BREAK SHARP EDGES .003[015] L076[381]
			CORNER FILLETS .02 L5[1]
			MACHINED SURFACES 12.5 32
			mm SHOWN IN [BRACKETS]

DRAWN BY: XAN	DATE: 09-24-2015	REGAL Regal Beloit America, Inc.
APPROVED BY: T.ZHAO	DATE: 09-24-2015	DESCRIPTION: MODEL-PFHP-48FR OUTLINE
REFERENCE: -	MATERIAL: -	PROCESS/FINISH: -
THIRD ANGLE PROJECTION	SIZE (DWG NO): K48AA87F07CX	SHEET: 1